



**India Meteorological Department  
Earth System Science  
Organisation  
(Ministry of Earth Sciences)**

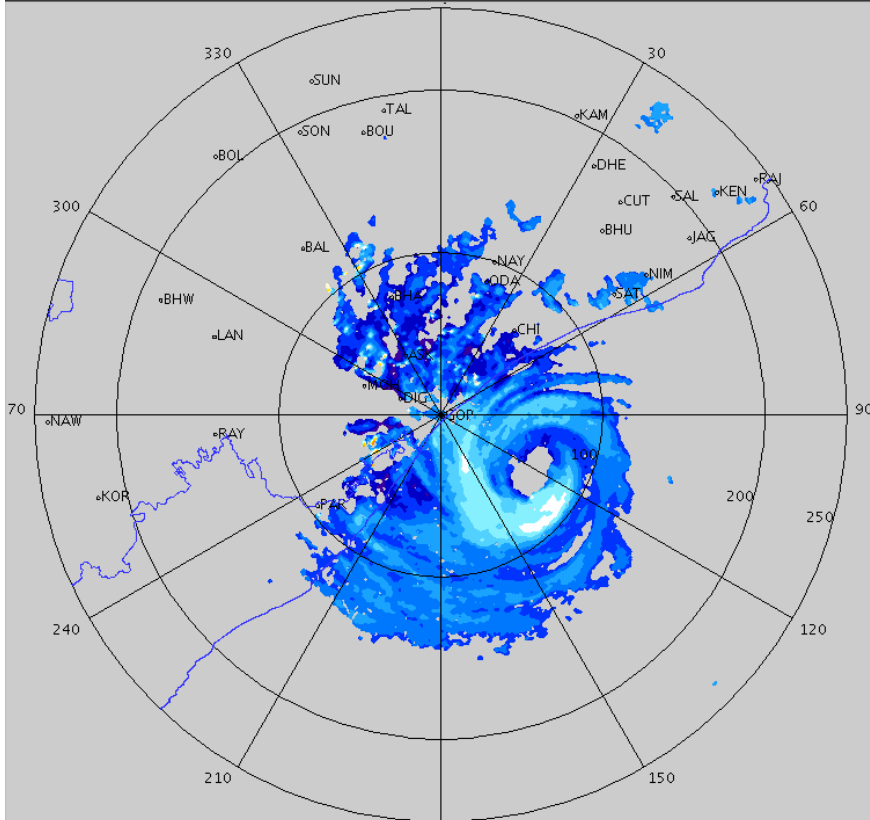
HOURLY UPDATE ON EXTREMELY SEVERE CYCLONIC STORM, 'FANI' OVER  
NORTHWEST & ADJOINING WESTCENTRAL BAY OF BENGAL

**BULLETIN NO. 21**

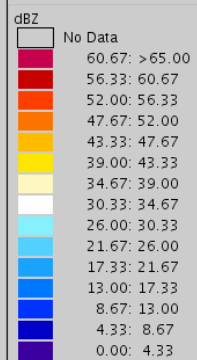
**DATE: 03-05-2019**

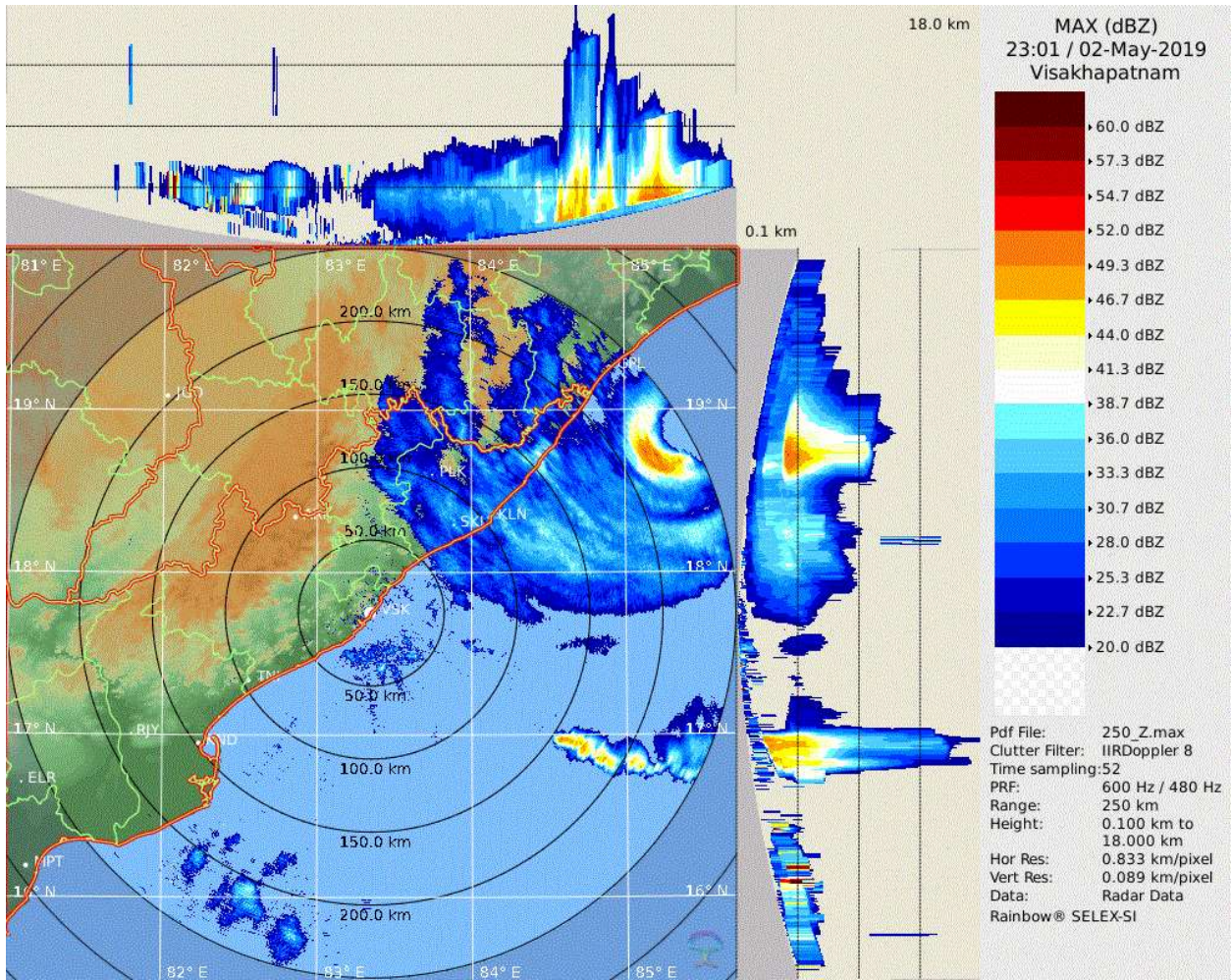
**TIME OF ISSUE: 0530 IST**

<b>DATE/TIME (IN IST) OF OBSERVATION</b>	<b>03-05-2019 (0430 HRS IST)</b>
LOCATION LATITUDE/LONGITUDE	THE EXTREMELY SEVERE CYCLONIC STORM "FANI" LAY CENTERED AT 0430 HOURS IST OF TODAY, 03 <sup>rd</sup> MAY, 2019 NEAR LAT. 18.9°N AND LONG. 85.4°E OVER NORTHWEST & ADJOINING WESTCENTRAL BAY OF BENGAL ABOUT 110 KM SOUTH-SOUTHWEST OF PURI, 65 KM SOUTHEAST OF GOPALPUR AND 260 KM EAST-NORTHEAST OF VISAKHAPATNAM.
CURRENT WIND SPEED OF THE CYCLONE	185-195 KMPH GUSTING TO 205 KMPH. RAINFALL REPORTED OVER GOPALPUR-14 CM, PURI-9 CM & KALINGAPATNAM-9 CM AT 0430 HRS IST OF TODAY. GOPALPUR REPORTED WIND SPEED OF 57 KNOTS (105 KMPH) AT 0430 HRS IST OF TODAY.
FORECAST	THE EXTREMELY SEVERE CYCLONIC STORM "FANI" IS VERY LIKELY TO MOVE NORTH-NORTHEASTWARDS AND CROSS ODISHA COAST BETWEEN GOPALPUR AND CHANDBALI CLOSE TO PURI DURING TODAY, THE 3 <sup>RD</sup> MAY FORENOON WITH MAXIMUM SUSTAINED WIND SPEED OF 170-180 KMPH GUSTING TO 200 KMPH.



Elevation	: 0.2 Deg
Z (Lo, Hi)	: -31.5, 90.0 dBZ
Display Range	: 250 Km
Display Res	: 0.7 Km/Pix
DDR Enable	: Yes
Scan Elev (Lo, Hi)	: 0.2, 21.0 Deg
PRF (Lo, Hi)	: 450, 600 Hz
Scan Res	: 150 mts
Scan RPM	: 2.0
Log Threshold	: 3 dB
DTP	: 42
Pulse Width	: 1.0 micro sec
Clutter Filter	: IIR-HP(54.0 Hz)
SQI	: 0.25
CSR	: 20 dB
Scan Range	: 240 Km
Preprocessings	: NONE
Filters	: NONE

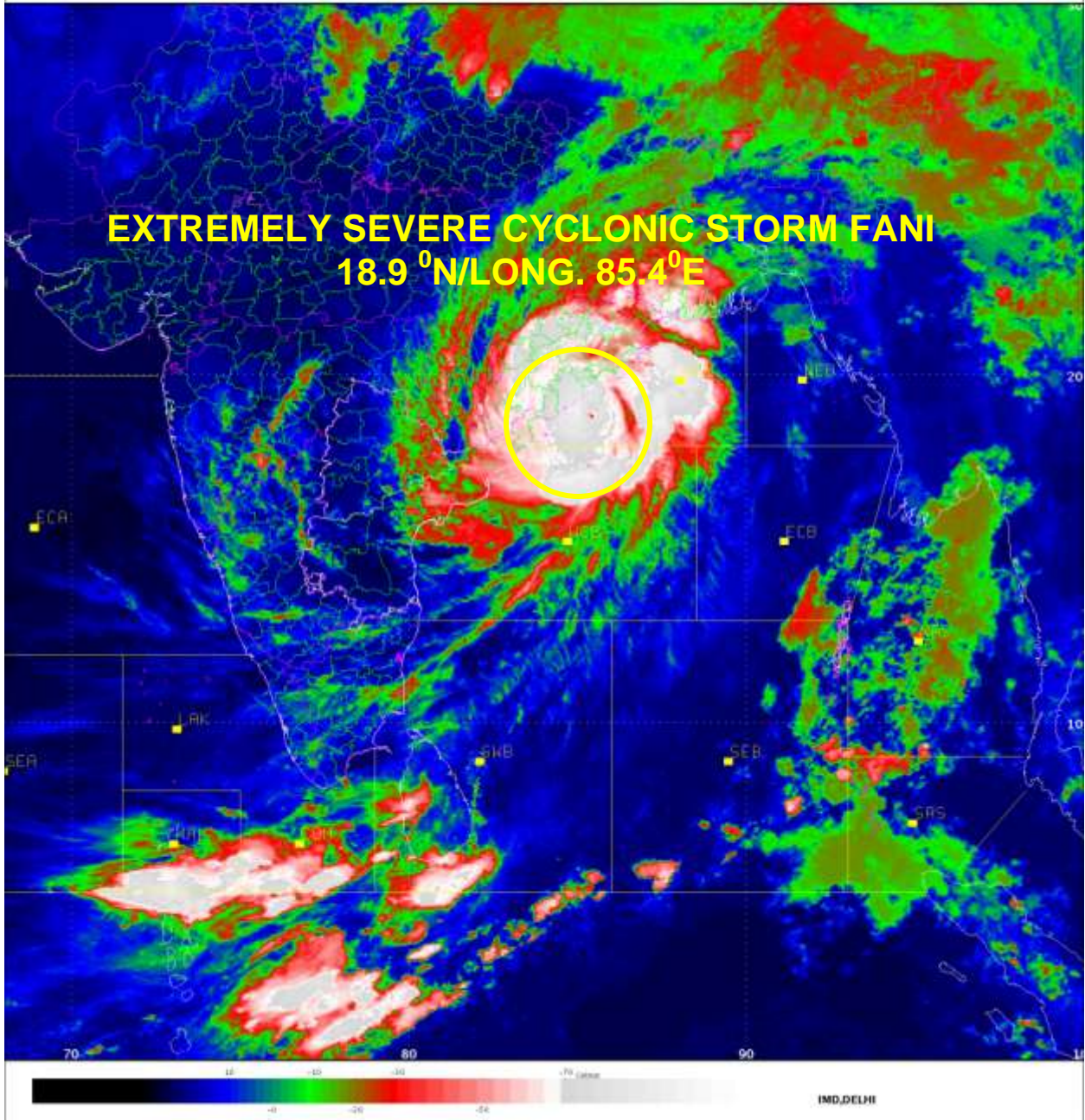


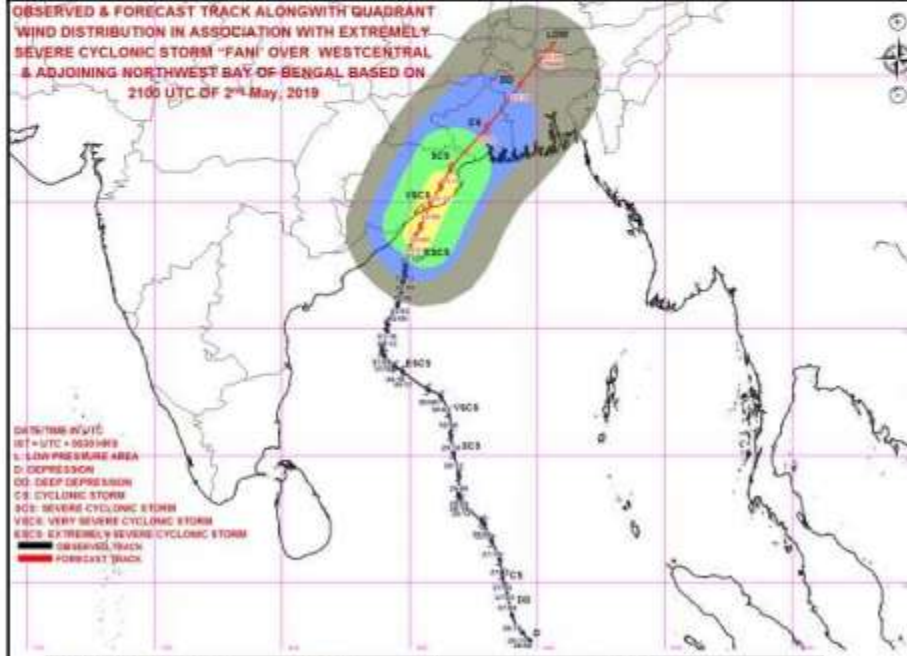
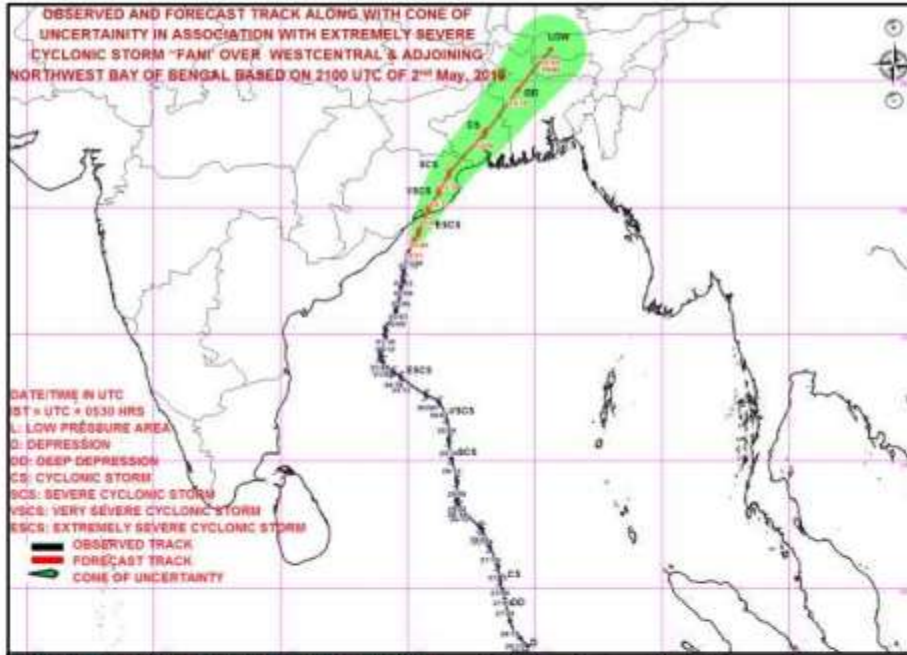






**EXTREMELY SEVERE CYCLONIC STORM FANI**  
**18.9 °N/LONG. 85.4°E**





MSW(knot/kmph)	Impact	Action
28-33 (51-62)	Very rough seas.	Total suspension of fishing operations
34-49 (62-91)	High to very high seas	Total suspension of fishing operations
50-63 (92-117)	Very High seas	Total suspension of fishing operations
> 64 (>118)	Phenomenal	Total suspension of fishing operations