



Government of India  
Ministry of Earth Sciences  
Earth System Science Organisation



Earth System Science Organisation  
India Meteorological Department

## PRESS RELEASE-4

Time of issue: 1300 hours IST

Dated: 28-04-2019

### Sub: Cyclonic Storm “FANI” over southeast Bay of Bengal & neighbourhood

Yesterday’s **cyclonic storm ‘FANI’** over southeast Bay of Bengal (BoB) & adjoining east Equatorial Indian Ocean (EIO) moved north-northwestwards during past 24 hours and lay centered at 0830 hrs IST of today, the 28<sup>th</sup> April 2019 near latitude 7.3°N and longitude 87.9°E over southeast BoB & neighbourhood, about 745 km east-southeast of Trincomalee (Sri Lanka), 1050 km southeast of Chennai (Tamil Nadu) and 1230 km south-southeast of Machilipatnam (Andhra Pradesh).

It is very likely to intensify into a **severe cyclonic storm** during next 12 hours and into a **very severe cyclonic storm** during subsequent 24 hours. **It is very likely to move northwestwards till 01<sup>st</sup> May evening and thereafter recurve north-northeastwards gradually.**

Forecast track and intensity are given in the following table:

| Date/Time(IST) | Position<br>(Lat. °N/ long. °E) | Maximum sustained surface<br>wind speed (Kmph) | Category of cyclonic<br>disturbance |
|----------------|---------------------------------|--|-------------------------------------|
| 28.04.19/0830  | 7.3/87.9                        | 80-90 gusting to 100                           | Cyclonic Storm                      |
| 28.04.19/1130  | 7.6/87.6                        | 80-90 gusting to 100                           | Cyclonic Storm                      |
| 28.04.19/1730  | 8.6/86.9                        | 90-100 gusting to 115                          | Severe Cyclonic Storm               |
| 28.04.19/2330  | 9.1/86.6                        | 95-105 gusting to 120                          | Severe Cyclonic Storm               |
| 29.04.19/0530  | 9.6/86.3                        | 100-110 gusting to 125                         | Severe Cyclonic Storm               |
| 29.04.19/1730  | 10.6/85.6                       | 110-120 gusting to 135                         | Severe Cyclonic Storm               |
| 30.04.19/0530  | 11.4/84.8                       | 120-130 gusting to 145                         | Very Severe Cyclonic Storm          |
| 30.04.19/1730  | 12.1/84.2                       | 130-140 gusting to 155                         | Very Severe Cyclonic Storm          |
| 01.05.19/0530  | 12.7/83.8                       | 140-150 gusting to 165                         | Very Severe Cyclonic Storm          |
| 01.05.19/1730  | 13.4/83.4                       | 150-160 gusting to 175                         | Very Severe Cyclonic Storm          |
| 02.05.19/0530  | 14.1/83.5                       | 150-160 gusting to 175                         | Very Severe Cyclonic Storm          |
| 02.05.19/1730  | 14.8/83.7                       | 140-150 gusting to 165                         | Very Severe Cyclonic Storm          |
| 03.05.19/0530  | 15.4/84.0                       | 130-140 gusting to 155                         | Very Severe Cyclonic Storm          |

### Warnings:

#### (i) Heavy rainfall warning

- Light to moderate rainfall at many places with heavy falls at isolated places very likely over Kerala on 29<sup>th</sup> & 30<sup>th</sup> April, 2019. Light to moderate rainfall at few places over north coastal Tamil Nadu & south coastal Andhra Pradesh on 29<sup>th</sup> & 30<sup>th</sup> April, 2019.

Contact: Cyclone Warning Division, Office of the Director General of Meteorology,  
India Meteorological Department, Ministry of Earth Sciences.

Phone: (91) 11-24652484, FAX: (91) 11-24643128, 24623220, E-mail: cwdhq2008@gmail.com, Website: [rsmcnewdelhi.imd.gov.in](http://rsmcnewdelhi.imd.gov.in)

Spatial rainfall distribution: Isolated: <25%, A few: 26-50%, Many: 51-75%, Most: 76-100%

Rainfall amount (mm): Heavy rain: 64.5 – 115.5, Very heavy rain: 115.6 – 204.4, Extremely heavy rain: 204.5 or more.

- Light to moderate rainfall at few places very likely over north coastal Andhra Pradesh & south coastal Odisha on 2<sup>nd</sup> May. It is likely to increase in intensity with heavy rainfall over coastal Odisha from 3<sup>rd</sup> May.

#### **(ii) Wind warning**

- Gale wind speed reaching 80-90 kmph gusting to 100 kmph is prevailing over southeast BoB & neighbourhood. It is very likely to become 90-100 kmph gusting to 115 kmph from 28<sup>th</sup> evening over the same area; 120-130 kmph gusting to 145 kmph over southwest BoB from 30<sup>th</sup> morning and 150-160 kmph gusting to 175 kmph over southwest & adjoining westcentral BoB off north Tamilnadu, Puducherry and south Andhra Pradesh coasts from 01<sup>st</sup> May evening. It is likely to become 130-140 kmph gusting to 150 kmph over westcentral BoB off Andhra Pradesh Coast on 3<sup>rd</sup> May 2019.
- Strong wind speed reaching 30-40 kmph gusting to 50 kmph likely to commence along & off Tamilnadu & Puducherry coast, Comorin area and Gulf of Mannar from 28<sup>th</sup> morning, becoming squally wind speed reaching 40-50 kmph gusting to 60 kmph from 29<sup>th</sup> morning. It is very likely to become squally wind speed reaching 50-60 kmph gusting to 70 kmph from 30<sup>th</sup> morning along north Tamilnadu, Puducherry and south Andhra Pradesh Coasts.
- Strong wind speed reaching 30-40 kmph gusting to 50 kmph likely to commence along & off Kerala coast from 28<sup>th</sup> evening and becoming squally wind speed reaching 40-50 kmph gusting to 60 kmph on 29<sup>th</sup> & 30<sup>th</sup>.
- Squally wind speed reaching 40-50 kmph gusting to 60 kmph is very likely to commence along & off north Andhra Pradesh & Odisha Coasts from 2<sup>nd</sup> and likely to become 50-60 kmph gusting to 70 kmph from 3<sup>rd</sup> May onwards over the same area.

#### **(iii) Sea condition**

- The sea condition is very high over southeast BoB & neighbourhood. It is very likely to become very high to phenomenal over Southwest Bay of Bengal from 30<sup>th</sup> morning and phenomenal over southwest & adjoining westcentral BoB, off north Tamilnadu, Puducherry and south Andhra Pradesh Coasts on 30<sup>th</sup> and over westcentral Bay of Bengal off Andhra Pradesh Coast during 1-3 May 2019.
- Sea conditions very likely to be rough to very rough along & off Puducherry, Tamilnadu and south Andhra Pradesh Coasts from 29<sup>th</sup> April to 1<sup>st</sup> May 2019, along & off north Andhra Pradesh Coasts on 1-3 May and along & off Odisha Coast from 2<sup>nd</sup> May onwards.

#### **(iv) Fishermen Warning**

- The fishermen are advised not to venture into deep sea areas of southeast BoB & adjoining EIO, over southwest BoB off Sri Lanka coast on 28<sup>th</sup>; southwest & adjoining westcentral BoB, along & off Sri Lanka, Puducherry, Tamilnadu & south Andhra Pradesh coasts from 29<sup>th</sup> April to 1<sup>st</sup> May, westcentral BoB along & off north Andhra Pradesh Coast during 1-3 May 2019 and northwest & adjoining westcentral BoB along & off Odisha coast from 2 May onwards.
- Those, who are out in deep sea above areas are advised return to the coasts.

The system is under continuous surveillance and concerned state governments are being informed regularly.

Kindly visit [www.imd.gov.in](http://www.imd.gov.in) and [www.rsmcnewdelhi.imd.gov.in](http://www.rsmcnewdelhi.imd.gov.in) for updates on the system.

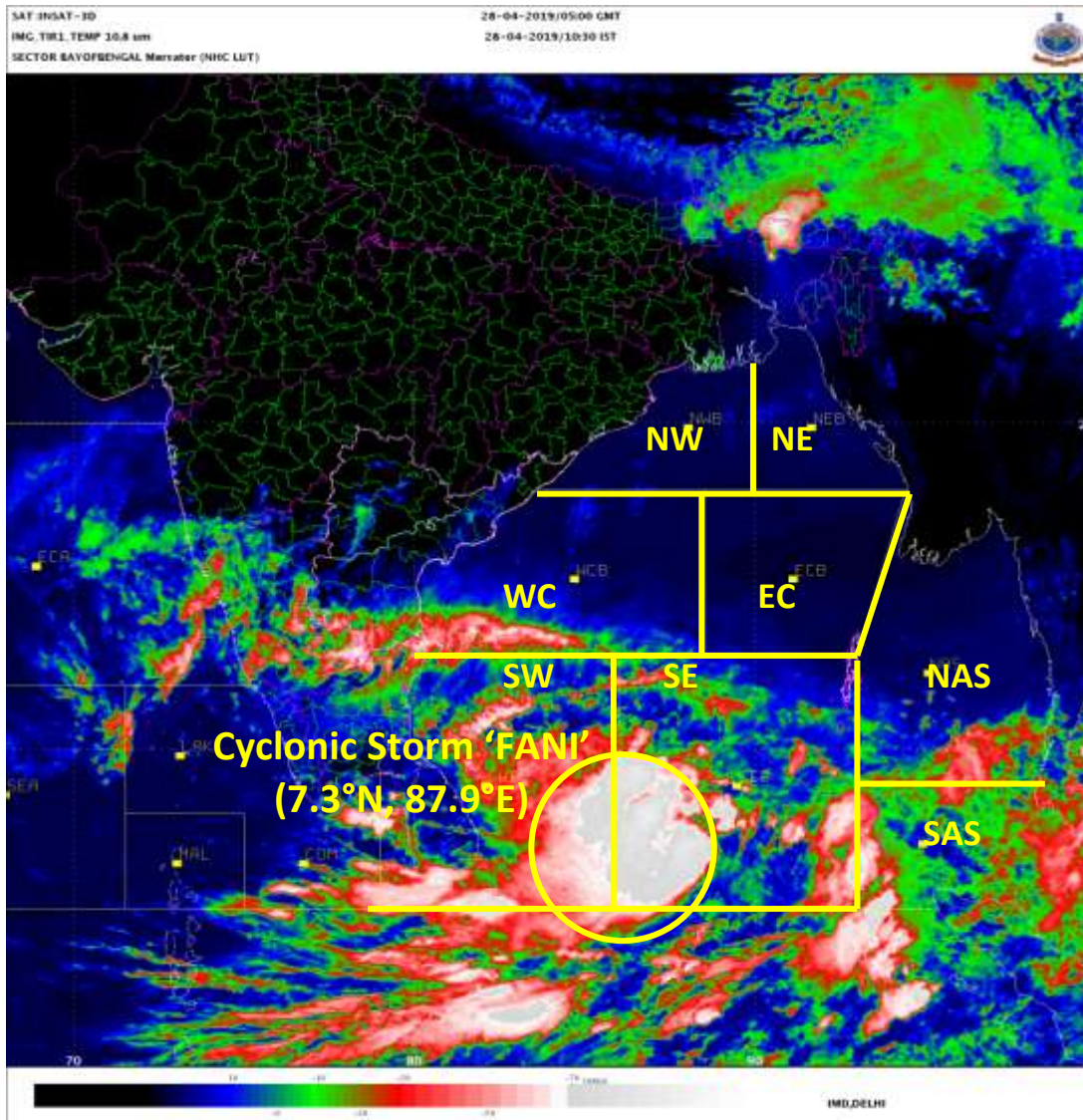
---

Contact: Cyclone Warning Division, Office of the Director General of Meteorology,  
India Meteorological Department, Ministry of Earth Sciences.

Phone: (91) 11-24652484, FAX: (91) 11-24643128, 24623220, E-mail: [cwdhq2008@gmail.com](mailto:cwdhq2008@gmail.com), Website: [rsmcnewdelhi.imd.gov.in](http://rsmcnewdelhi.imd.gov.in)

Spatial rainfall distribution: Isolated: <25%, A few: 26-50%, Many: 51-75%, Most: 76-100%

Rainfall amount (mm): Heavy rain: 64.5 – 115.5, Very heavy rain: 115.6 – 204.4, Extremely heavy rain: 204.5 or more.

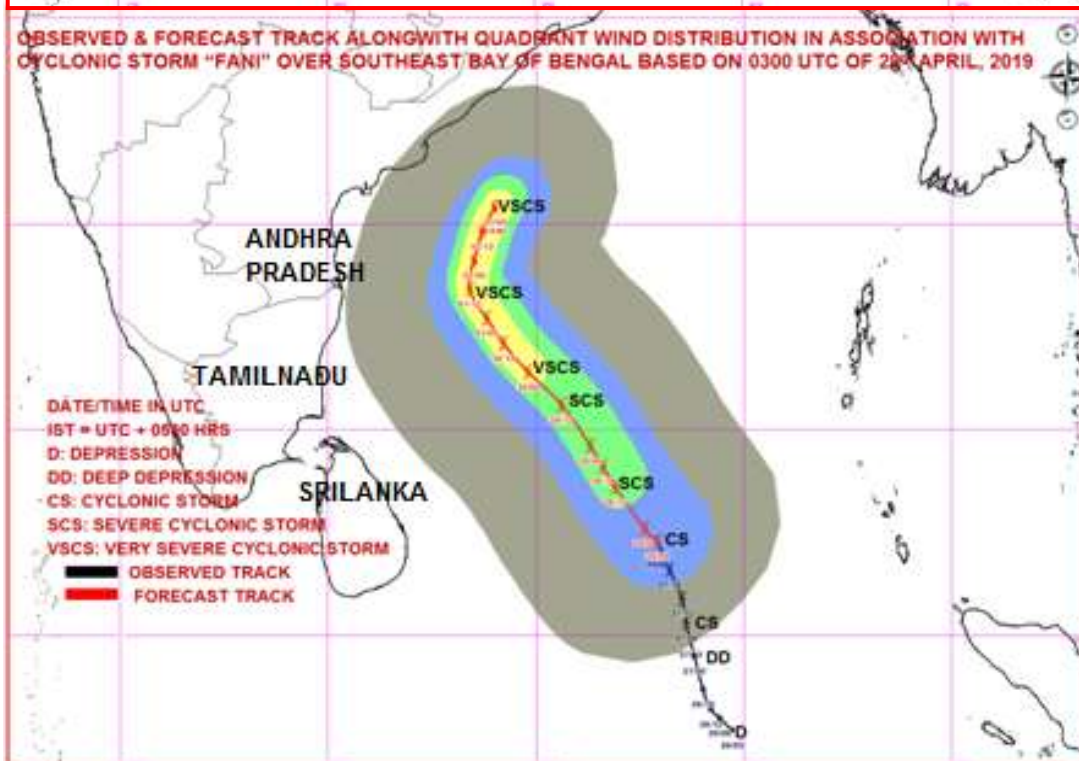
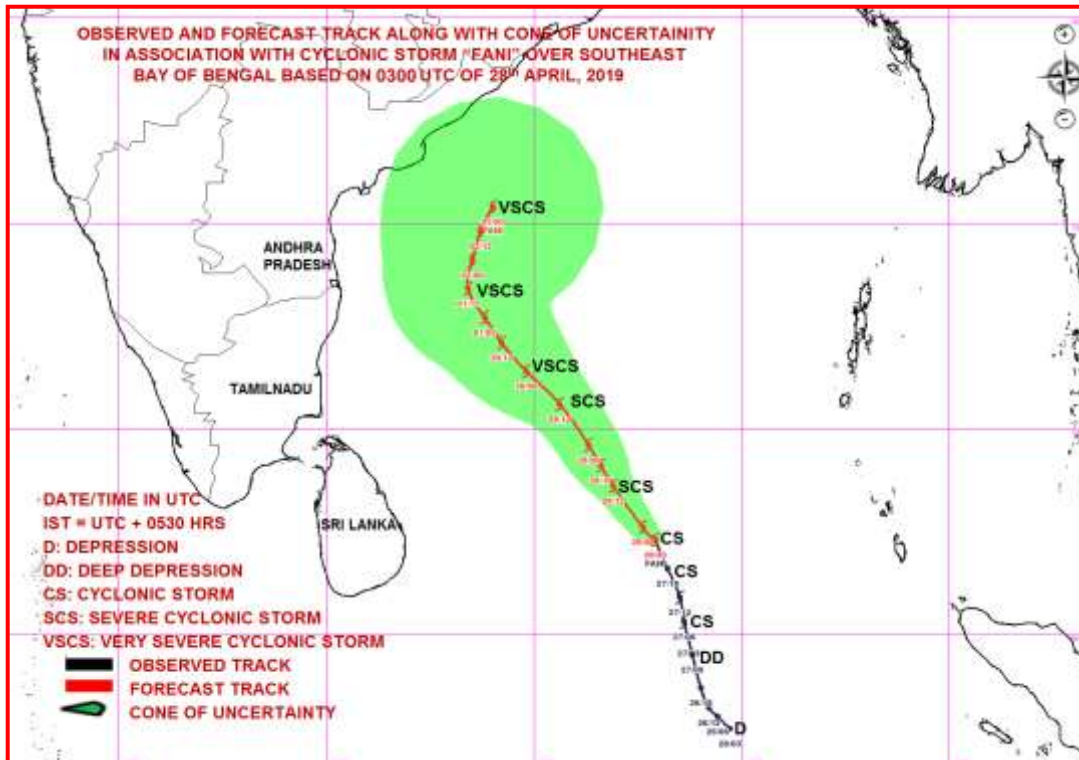


Contact: Cyclone Warning Division, Office of the Director General of Meteorology,  
 India Meteorological Department, Ministry of Earth Sciences.

Phone: (91) 11-24652484, FAX: (91) 11-24643128, 24623220, E-mail: cwdhq2008@gmail.com, Website: [rsmcnewdelhi.imd.gov.in](http://rsmcnewdelhi.imd.gov.in)

Spatial rainfall distribution: Isolated: <25%, A few: 26-50%, Many: 51-75%, Most: 76-100%

Rainfall amount (mm): Heavy rain: 64.5 – 115.5, Very heavy rain: 115.6 – 204.4, Extremely heavy rain: 204.5 or more.



| MSW(knot)/kmph)  | Impact                 | Action                                 |
|------------------|------------------------|--|
| 28-33 / (51-62)  | Very rough seas.       | Total suspension of fishing operations |
| 34-49 / (63-91)  | High to very high seas | Total suspension of fishing operations |
| 50-63 / (92-117) | Very High seas         | Total suspension of fishing operations |
| ≥ 64 (≥118)      | Phenomenal             | Total suspension of fishing operations |

Contact: Cyclone Warning Division, Office of the Director General of Meteorology,  
India Meteorological Department, Ministry of Earth Sciences.

Phone: (91) 11-24652484, FAX: (91) 11-24643128, 24623220, E-mail: cwdhq2008@gmail.com, Website: [rsmcnewdelhi.imd.gov.in](http://rsmcnewdelhi.imd.gov.in)

Spatial rainfall distribution: Isolated: <25%, A few: 26-50%, Many: 51-75%, Most: 76-100%

Rainfall amount (mm): Heavy rain: 64.5 – 115.5, Very heavy rain: 115.6 – 204.4, Extremely heavy rain: 204.5 or more.