



Government of India
Ministry of Earth Sciences
Earth System Science Organisation



Earth System Science Organisation
India Meteorological Department

PRESS RELEASE-3

Time of issue: 1630 hours IST

Dated: 11-06-2019

Sub: Deep Depression intensified into cyclonic storm “VAYU” over Arabian Sea – Cyclone Warning for Gujarat Coast: Orange Message

Yesterday’s deep depression over eastcentral and adjoining southeast Arabian Sea (AS) & Lakshadweep area moved north-northwestwards and intensified into cyclonic storm “VAYU” (pronounced as VAA’YU) during same midnight (2330 hrs IST of 10th June). Thereafter, it moved nearly northwards, intensified slightly and lay centred at 1130 hrs IST of today, the 11th June, 2019 near latitude 15.2°N and longitude 70.6°E over eastcentral AS, about 340 km west-southwest of Goa, 490 km south-southwest of Mumbai (Maharashtra) and 630 km nearly south of Veraval (Gujarat). It is very likely to intensify further into a Severe Cyclonic Storm during next 12 hours.

It is very likely to move nearly northwards and cross Gujarat coast between Porbandar and Mahuva around Veraval & Diu region as a Severe Cyclonic Storm with wind speed 110-120 kmph gusting to 135 kmph during early morning of 13th June 2019.

Forecast track and intensity are given in the following table:

Date/Time(IST)	Position (Lat. °N/ long. °E)	Maximum sustained surface wind speed (Kmph)	Category of cyclonic disturbance
11.06.19/1130	15.2/70.6	80-90 gusting to 100	Cyclonic Storm
11.06.19/1730	16.1/70.6	90-100 gusting to 115	Severe Cyclonic Storm
11.06.19/2330	16.7/70.6	95-105 gusting to 120	Severe Cyclonic Storm
12.06.19/0530	17.5/70.5	100-110 gusting to 125	Severe Cyclonic Storm
12.06.19/1130	18.4/70.5	105-115 gusting to 130	Severe Cyclonic Storm
12.06.19/2330	19.9/70.4	110-120 gusting to 135	Severe Cyclonic Storm
13.06.19/1130	21.3/70.2	110-120 gusting to 135	Severe Cyclonic Storm
13.06.19/2330	22.0/69.9	80-90 gusting to 100	Cyclonic Storm
14.06.19/1130	22.5/69.7	50-60 gusting to 70	Deep Depression
14.06.19/2330	23.1/69.3	30-40 gusting to 50	Depression

Warnings:

(i) Heavy rainfall warning:

Sub-Divisions	11 June 2019*	12 June 2019*	13 June 2019*	14 June 2019*
Konkan & Goa	Fairly widespread rainfall with heavy falls at isolated places	Widespread rainfall with heavy to very heavy falls at isolated places	Fairly widespread rainfall with heavy falls at isolated places	Fairly widespread rainfall
Saurashtra & Kutch	Rainfall at isolated places	Fairly widespread rainfall with heavy falls at isolated places	Widespread rainfall with heavy to very heavy falls at few places and extremely heavy falls at isolated places	Fairly widespread rainfall with heavy to very heavy falls at isolated places
South Gujarat Region	Rainfall at isolated places	Fairly widespread rainfall with heavy falls at isolated places	Rainfall at a few places with heavy falls at isolated places	Rainfall at a few places

Contact: Cyclone Warning Division, Office of the Director General of Meteorology, India Meteorological Department, Ministry of Earth Sciences.

Phone: (91) 11-24652484, FAX: (91) 11-24643128, 24623220, E-mail: cwdhq2008@gmail.com, Website: rsmcnewdelhi.imd.gov.in

Spatial rainfall distribution: Isolated: <25%, A few: 26-50%, Many: 51-75%, Most: 76-100%

Rainfall amount (mm): Heavy rain: 64.5 – 115.5, Very heavy rain: 115.6 – 204.4, Extremely heavy rain: 204.5 or more.

Note: * Rainfall till 0830 IST of next day.

Legends: **Yellow: Be Updated; Orange- Be prepared; Red- Take action, Green: No warning**
Heavy rain: 64.5-115.5 mm/day; Very heavy rain: 115.6-204.4 mm/day; Extremely heavy rain: more than 204.4 mm/day

(ii) Wind warning

- **11th June:** Gale Wind speed reaching 80-90 kmph gusting to 100 kmph over Eastcentral Arabian Sea and 50-60 kmph gusting to 70 kmph along & off North Maharashtra coast by 11th evening. It is very likely to be 40-50 kmph gusting to 60 kmph over Lakshadweep area, Kerala, Karnataka & south Maharashtra Coasts.
- **12th June:** Wind speed is very likely to increase further becoming gale wind speed reaching **110-120 kmph gusting to 135 kmph** over eastcentral & adjoining northeast Arabian Sea by 12th night. It is very likely to be 60-70 kmph gusting to 80 kmph over Gujarat Coast from 12th morning and become gale wind speed reaching **110-120 kmph gusting to 135 kmph** by 12th night. It is very likely to be 50-60 kmph gusting to 70 kmph over Maharashtra Coast.
- **13th June:** Gale wind speed of the order of **110-120 kmph gusting to 135 kmph** very likely over north Arabian Sea & Gujarat coast in morning hours and decrease gradually thereafter. It is very likely to be 50-60 kmph gusting to 70 kmph over north Maharashtra Coasts & northern parts of eastcentral Arabian Sea.

(iii) Sea condition

- The Sea condition is very likely to be high to very high over eastcentral Arabian Sea on 11th. The sea condition is very likely to become very high to phenomenal over eastcentral & adjoining northeast Arabian Sea & Gujarat coast from 12th evening and over north Arabian Sea on 13th June 2019.
- The sea condition is very likely to be rough over Lakshadweep area, along & off Kerala, Karnataka & south Maharashtra Coasts on 11th; rough to very rough along & off Maharashtra Coast on 12th; very rough to high along & off Gujarat, north Maharashtra Coasts & northern parts of eastcentral Arabian Sea on 13th June, 2019.

(iv) Fishermen Warning

- The fishermen are advised not to venture into Southeast Arabian Sea, Lakshadweep area, along & off Kerala and Karnataka coasts on 11th; Eastcentral Arabian Sea and along & off Maharashtra Coast on 11th & 12th; northeast Arabian sea and along & off Gujarat coast on 12th & 13th.

(v) Storm Surge Warning

- Storm surge of height of about 1.0- 1.5 m above the astronomical tides likely to inundate the low lying coastal areas of Kutch, Devbhoomi Dwarka, Porbandar, Junagarh, Diu, Gir Somnath, Amreli and Bhavnagar districts at the time of landfall.

(vi) Damage Expected and Action suggested for Kutch, Devbhoomi Dwarka, Porbandar, Rajkot, Junagarh, Diu, Gir Somnath, Amreli and Bhavnagar districts of Gujarat:

- (a) Damage to thatched houses/ huts. Roof tops may blow off. Unattached metal sheets may fly.
- (b) Damage to power and communication lines.
- (c) Major damage to Kutch and some

Contact: Cyclone Warning Division, Office of the Director General of Meteorology,
India Meteorological Department, Ministry of Earth Sciences.

Phone: (91) 11-24652484, FAX: (91) 11-24643128, 24623220, E-mail: cwdhq2008@gmail.com, Website: rsmcnewdelhi.imd.gov.in

Spatial rainfall distribution: Isolated: <25%, A few: 26-50%, Many: 51-75%, Most: 76-100%

Rainfall amount (mm): Heavy rain: 64.5 – 115.5, Very heavy rain: 115.6 – 204.4, Extremely heavy rain: 204.5 or more.

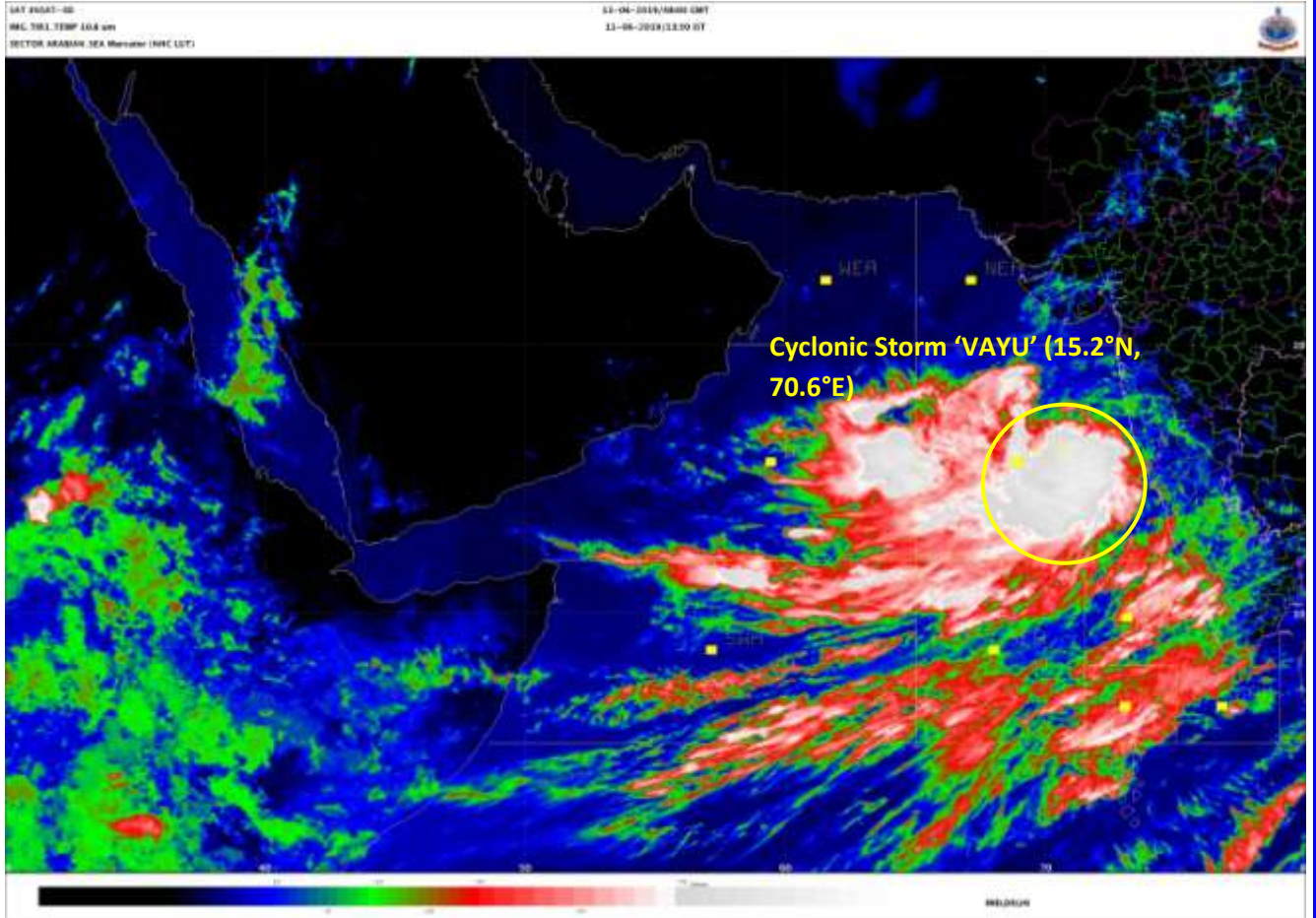
damage to Pucca roads. Flooding of escape routes. (d) Breaking of tree branches, uprooting of large avenue trees. Damage to banana and papaya trees. Large dead limbs blown from trees. (e) Major damage to coastal crops. (f) Damage to embankments/ salt pans.

(vii) Action suggested:

(a) Regulate road & rail traffic (b) Total suspension of fishing operations. (c) Coastal hutment dwellers to be moved to safer places. People in affected areas to remain indoors. (d) Movement in motor boats unsafe. (e) Inundation of low lying areas in the along the coasts due to heavy rainfall and storm surge.

The system is under continuous surveillance and concerned state governments are being informed regularly.

Kindly visit www.imd.gov.in and www.rsmcnewdelhi.imd.gov.in for updates on the system.

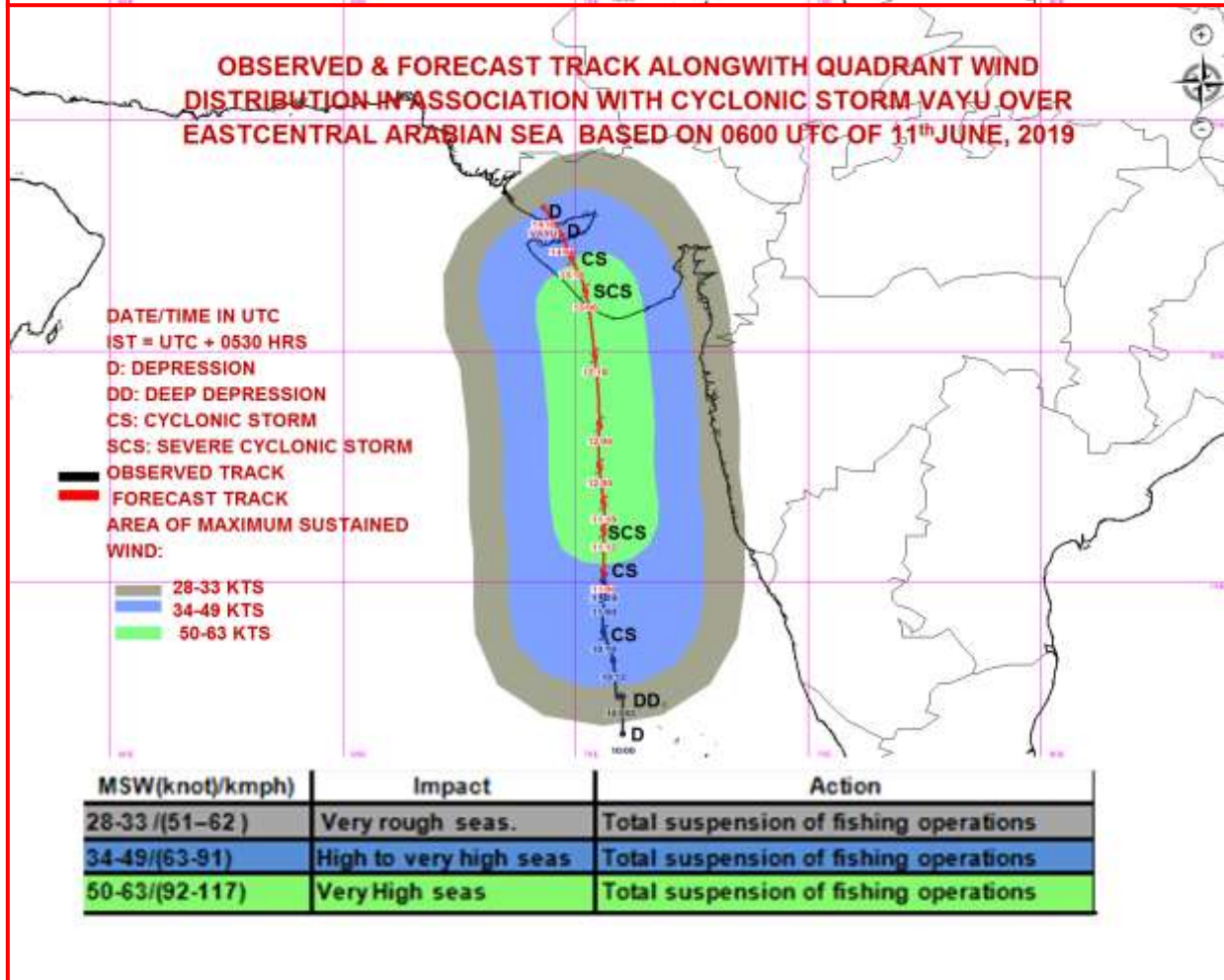
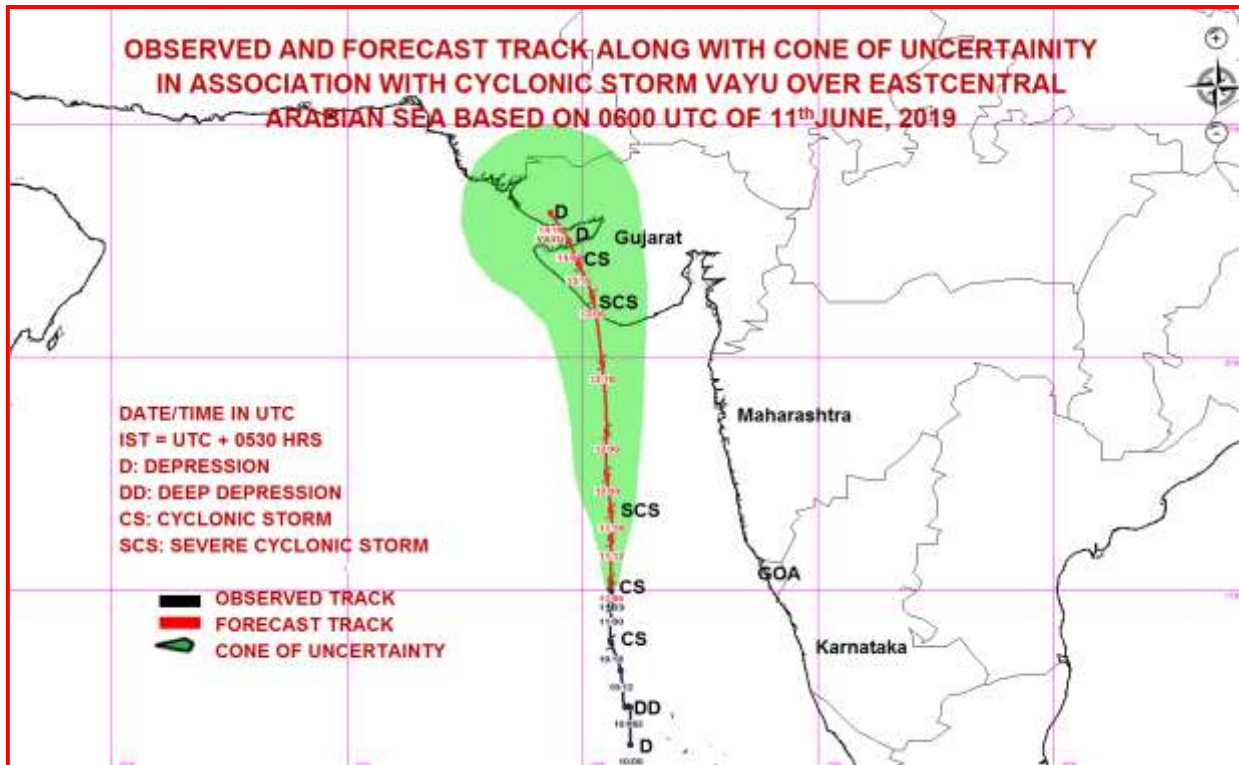


Contact: Cyclone Warning Division, Office of the Director General of Meteorology,
India Meteorological Department, Ministry of Earth Sciences.

Phone: (91) 11-24652484, FAX: (91) 11-24643128, 24623220, E-mail: cwdhq2008@gmail.com, Website: rsmcnewdelhi.imd.gov.in

Spatial rainfall distribution: Isolated: <25%, A few: 26-50%, Many: 51-75%, Most: 76-100%

Rainfall amount (mm): Heavy rain: 64.5 – 115.5, Very heavy rain: 115.6 – 204.4, Extremely heavy rain: 204.5 or more.



Contact: Cyclone Warning Division, Office of the Director General of Meteorology,
India Meteorological Department, Ministry of Earth Sciences.

Phone: (91) 11-24652484, FAX: (91) 11-24643128, 24623220, E-mail: cwdhq2008@gmail.com, Website: rsmcnewdelhi.imd.gov.in

Spatial rainfall distribution: Isolated: <25%, A few: 26-50%, Many: 51-75%, Most: 76-100%

Rainfall amount (mm): Heavy rain: 64.5 – 115.5, Very heavy rain: 115.6 – 204.4, Extremely heavy rain: 204.5 or more.