



WARNING 03/21

CYCLONIC STORM 'ELOISE' OVER SOUTH WEST INDIAN OCEAN

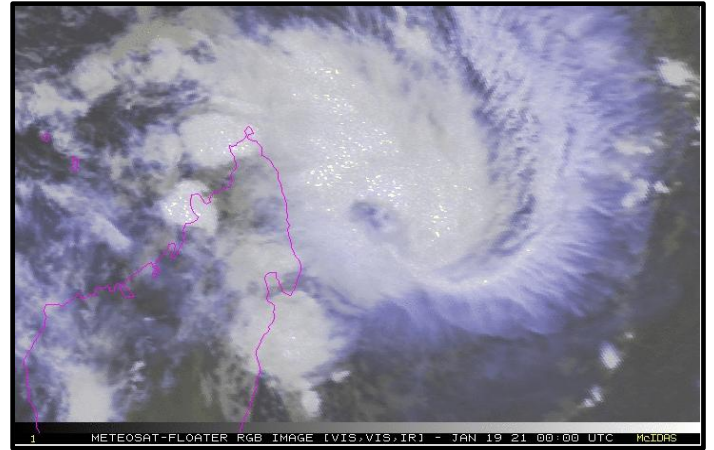
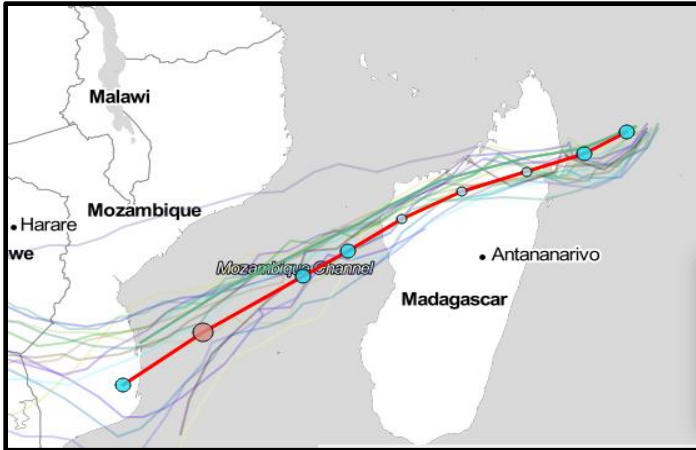
A tropical cyclone 'ELOISE' in approximate position 14⁰24'S 52⁰48'E has been monitored at 0600 UTC on 19 January 2021. The cyclone which is approximately 200 nm South East of Antsiranana has tracked West-South Westwards at about 10 kn over the past six hours. The present wind speeds associated with the storm was observed to be around 45-50 kn.

The maximum significant wave height observed was 16 feet.

Forecast. Over the next two days, it is expected to move West South West at a moderate intensity and is expected to hit the East coast of Madagascar in the night of 19/ 20 January 2021. The storm is likely to intensify over the next 24 hours and is likely to bring in wind speeds of 50-60 kn at the time of reaching the coast. The storm is expected to cross over the land at a reduced intensity and enter the Mozambique channel. Upon entering the Mozambique channel it is likely to further intensify before making the landfall in Mozambique between 23 and 24 January 21.

Source:

1. <http://metSERVICE.intnet.mu/current-cyclone.php>
2. <https://www.cyclocane.com/eloise-storm-tracker/>
3. <https://incois.gov.in/portal/osf/osfGlobal.jsp?region=global&area=indianocean¶m=swH>
4. <https://reliefweb.int/report/madagascar/southern-africa-tropical-storm-eloise-flash-update-no1-18-january-2021>



VESSELS ARE ADVISED TO EXERCISE DUE CAUTION WHILE TRANSITING THROUGH THE AREA AND REPORT TO NEAREST MRCC AND IFC-IOR AT ifc-ior.gurugram@navy.gov.in IN CASE FACING ANY DIFFICULTY AT SEA.

