



WARNING 02/21

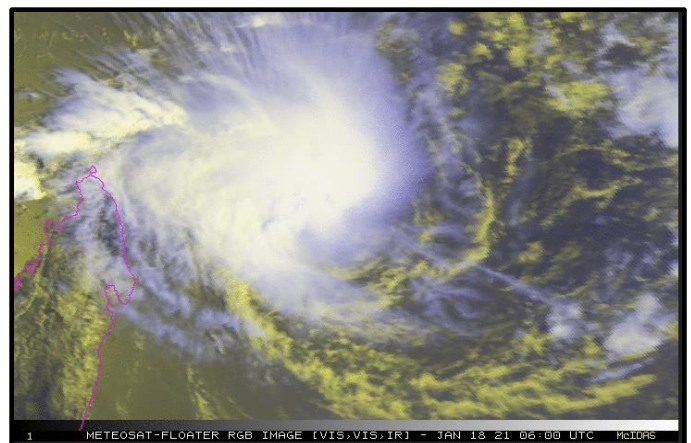
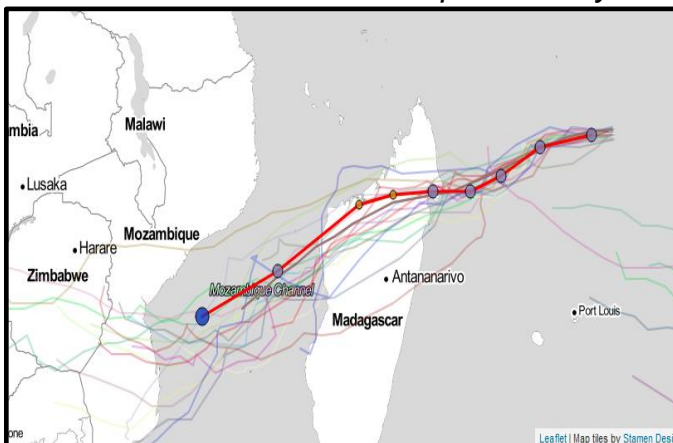
CYCLONIC STORM 'ELOISE' OVER SOUTH WEST INDIAN OCEAN

A tropical cyclone 'ELOISE' in approximate position 13°42'S 56°36'E has been monitored at 0600 UTC on 18 January 2021. The cyclone which is approximately 440 nm East-South East of Antsiranana has tracked West-South Westwards at about 15 kn over the past six hours. The present wind speeds associated with the storm was observed to be around 35 kn.

The maximum significant wave height observed was 16 feet.

Forecast. Over the next two days, it is expected to move West South West at a moderate intensity and is expected to hit the East coast of Madagascar in the morning of 20 January 2021. The storm is likely to intensify over the next 24-48 hours and is likely to bring in wind speeds of 55-60 kn at the time of reaching the coast. The storm is expected to cross over the land and enter the Mozambique channel.

Source: <https://www.cyclocane.com/eloise-storm-tracker/>



VESSELS ARE ADVISED TO EXERCISE DUE CAUTION WHILE TRANSITING THROUGH THE AREA AND REPORT TO NEAREST MRCC AND IFC-IOR AT ifc-ior.gurugram@navy.gov.in IN CASE FACING ANY DIFFICULTY AT SEA.

