



WARNING 16/20

CYCLONIC STORM 'BUREVI' OVER SOUTH WEST BAY OF BENGAL

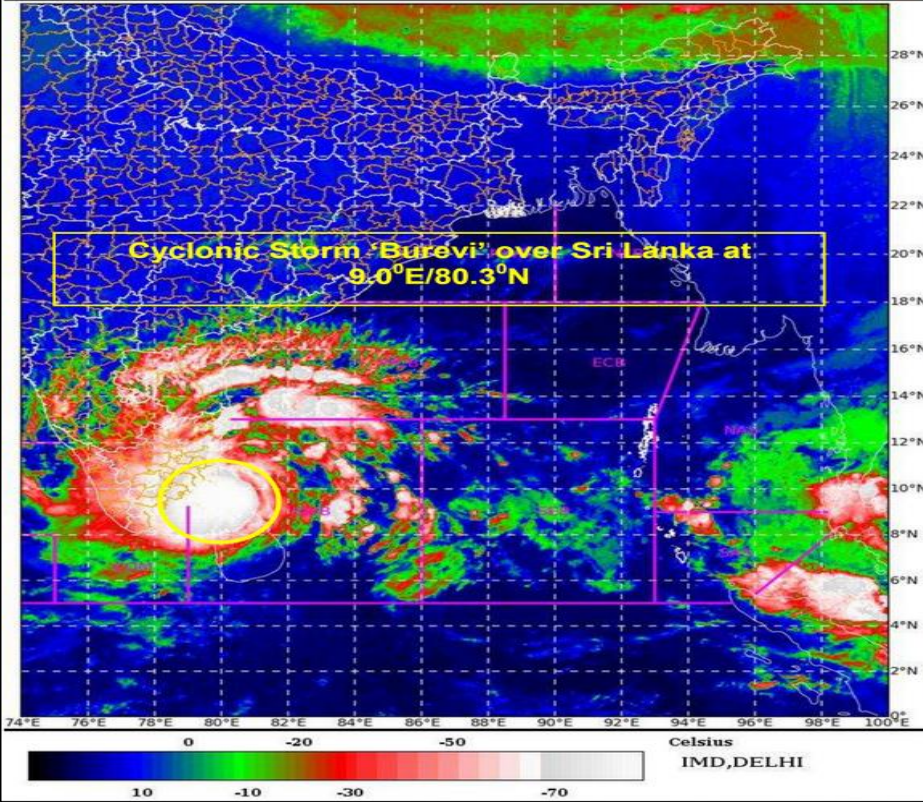
The Cyclonic Storm '*BUREVI*' over Sri Lanka moved West -NorthWestwards with a speed of 11 kmph during past six hours and lay Centered at 0001 UTC of 03 December 2020 over Sri Lanka near latitude 9.0°N and longitude 80.3°E, about 40 km east of Mannar, 120 km East-SouthEast of Pamban and 320 km East-NorthEast of Kanyakumari. It is very likely to move West-NorthWestwards and emerge into Gulf of Mannar near Mannar coast during next 3 hours.

The Cyclonic Storm with wind speed of 70-80 gusting to 90 kmph would be Centered very close to Pamban around noon of 03 December 2020. It would then move nearly West-SouthWestwards across Pamban area by afternoon and cross South Tamil Nadu coast between Pamban and Kanyakumari during 03 December 2020 night and 04 December 2020 early morning as a Cyclonic Storm with wind speed of 70-80 gusting to 90 kmph. Thus its impact on South Tamil Nadu coastal districts is very likely to commence from 03 December 2020 forenoon initially over Ramanathapuram district and gradually towards Kanyakumari district.

Source: IMD

VESSELS ARE ADVISED TO EXERCISE DUE CAUTION WHILE TRANSITING THROUGH THE AREA AND REPORT TO IFC-IOR AT ifc-ior.gurugram@navy.gov.in IN CASE FACING ANY DIFFICULTY AT SEA.

SAT : INSAT-3D IMG 03-12-2020/(0030 to 0057) GMT
 IMG_TIR1_TEMP 10.8 um 03-12-2020/(0600 to 0627) IST
 LIC Mercator



OBSERVED AND FORECAST TRACK ALONGWITH CONE OF UNCERTAINTY OF CYCLONIC STORM "BUREVI" OVER SRI LANKA BASED ON 0000 UTC OF 3rd DECEMBER, 2020.

