



WARNING 04/21

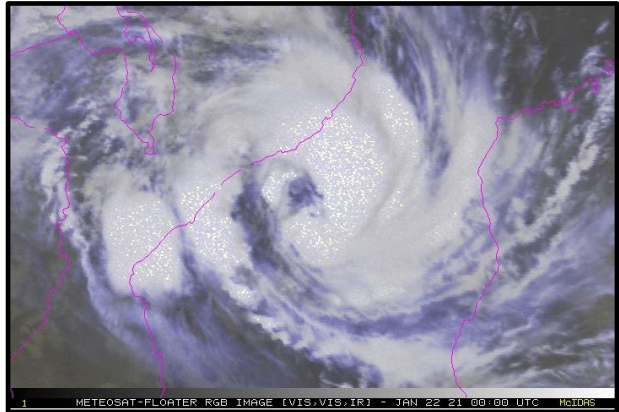
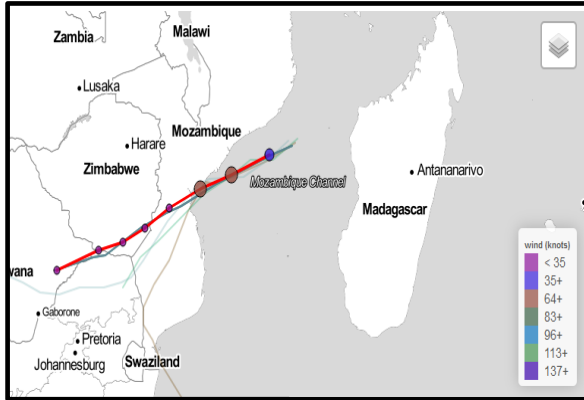
CYCLONIC STORM 'ELOISE' OVER SOUTH WEST INDIAN OCEAN

A tropical storm '*ELOISE*' in approximate position 18⁰.2S 39⁰.1E has been monitored at 0001 UTC on 22 January 2021. It is now in the Mozambique Channel, where it is expected to gain strength and become a Tropical Cyclone. The present wind speeds associated with the storm was observed to be around 50-55 kn.

Forecast. Over the next 24 hours, the storm is expected intensify into a cyclone and thereafter make a landfall in Sofala Province, Mozambique, probably on 23 January 21. Destructive wind speeds between 75-90 kn are expected to be associated with the landfall. After landfall, Eloise is expected to lose strength as it crosses land but cause heavy rains in parts of eastern South Africa, particularly Limpopo, Mpumalanga and KwaZulu-Natal provinces.

Source:

1. <https://www.cyclocane.com/eloise-storm-tracker/>
2. <https://incois.gov.in/portal/osf/osfGlobal.jsp?region=global&area=indianocean¶m=swh>
3. <https://reliefweb.int/report/mozambique/southern-africa-tropical-storm-eloise-flash-update-no4-21-january-2021>
4. <https://news.pindula.co.zw/2021/01/21/tropical-storm-eloise-could-become-a-tropical-cyclone/>



VESSELS ARE ADVISED TO EXERCISE DUE CAUTION WHILE TRANSITING THROUGH THE AREA AND REPORT TO NEAREST MRCC AND IFC-IOR AT ifc-ior.gurugram@navy.gov.in IN CASE FACING ANY DIFFICULTY AT SEA.

